

vmware®  
vEXPERT

2014



- Best Community Blogs

VINDEREN ER... Michael Ryom!



vCloud Automation Center

MichaelRyom.dk



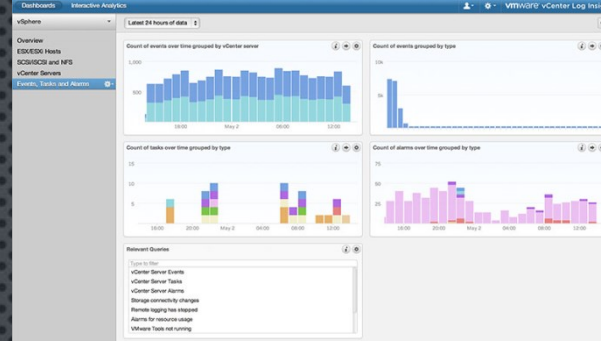
@MichaelRyom



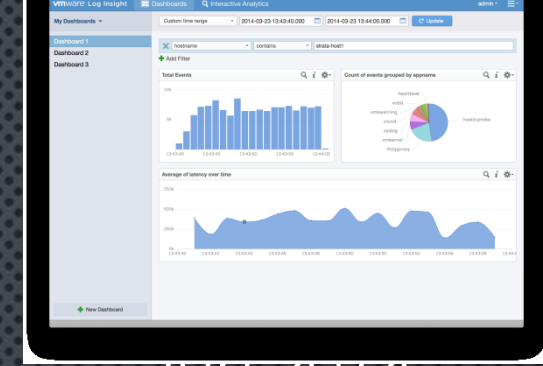
dk.linkedin.com/in/michaelryom



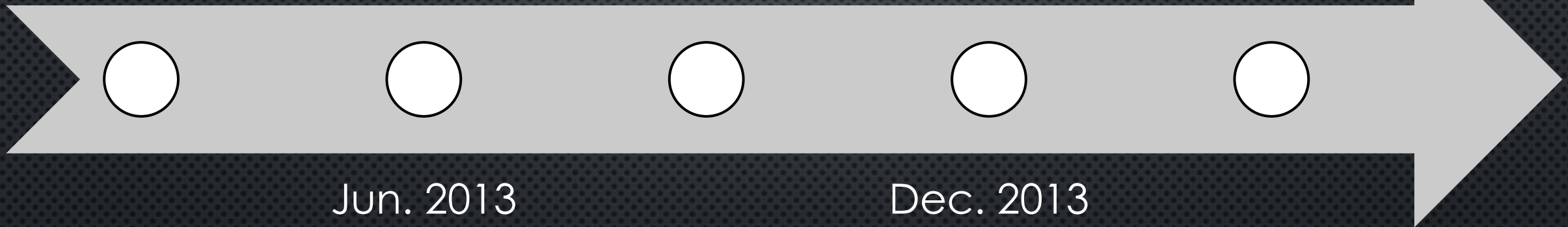
Aug. 2012  
VMware  
buys  
Pattern  
Insight



Jul. 2013  
Log Insight  
1.0 GA



JUN 2014  
Log Insight  
2.0



Jun. 2013  
Log Insight  
1.0 Public  
Beta

Dec. 2013  
Log Insight  
1.5



## What's New in Log Insight 1.5

Easy creation and import/export of Content Packs for administrators and users

Active Directory support for authentication

Added unique count function

Significant query performance improvements by optimizing the execution of common queries

Usability improvements

User interface for syslog configuration of ESXi hosts

User interface for upgrading from previous versions of Log Insight through Administration UI

## What's New in Log Insight 2.0

Scale-Out with High Availability

5x-10x throughput improvement in Cluster mode

Single UI to query all the data

Proactive Analytics

Machine learning enabled summarization of event types & schema recognition

Smart fields to aid in extraction

Super-Powered Dashboards

Easily add new data filters on the fly

Interact between dashboard widgets

RESTful API for log ingestion

Improved self-monitoring tools

Windows collection agent

Forwards Windows event logs

Monitors & forwards flat log files

Centralized reporting & management

E-mail alerts to notify about license expiration





## Log Insight 2.0 Configuration

Appliance (Per node)	Minimums	Maximums
CPU	2 vCPUs	16 vCPUs
Memory	2 GB	32 GB
IOPS	75	1500
Storage	20 GB + Data	2TB(Data) + OS

Minimums	Maximums
vCenter 5.0 ESXi 5.0 vCops 5.6 (Only Alerts)/5.7 Full Vista or newer Server 2008 or newer	750 Connected devices per node 7500 EPS per node 6/16 Appliance per cluster 60 Windows event log channels



# License overview

## Log Insight

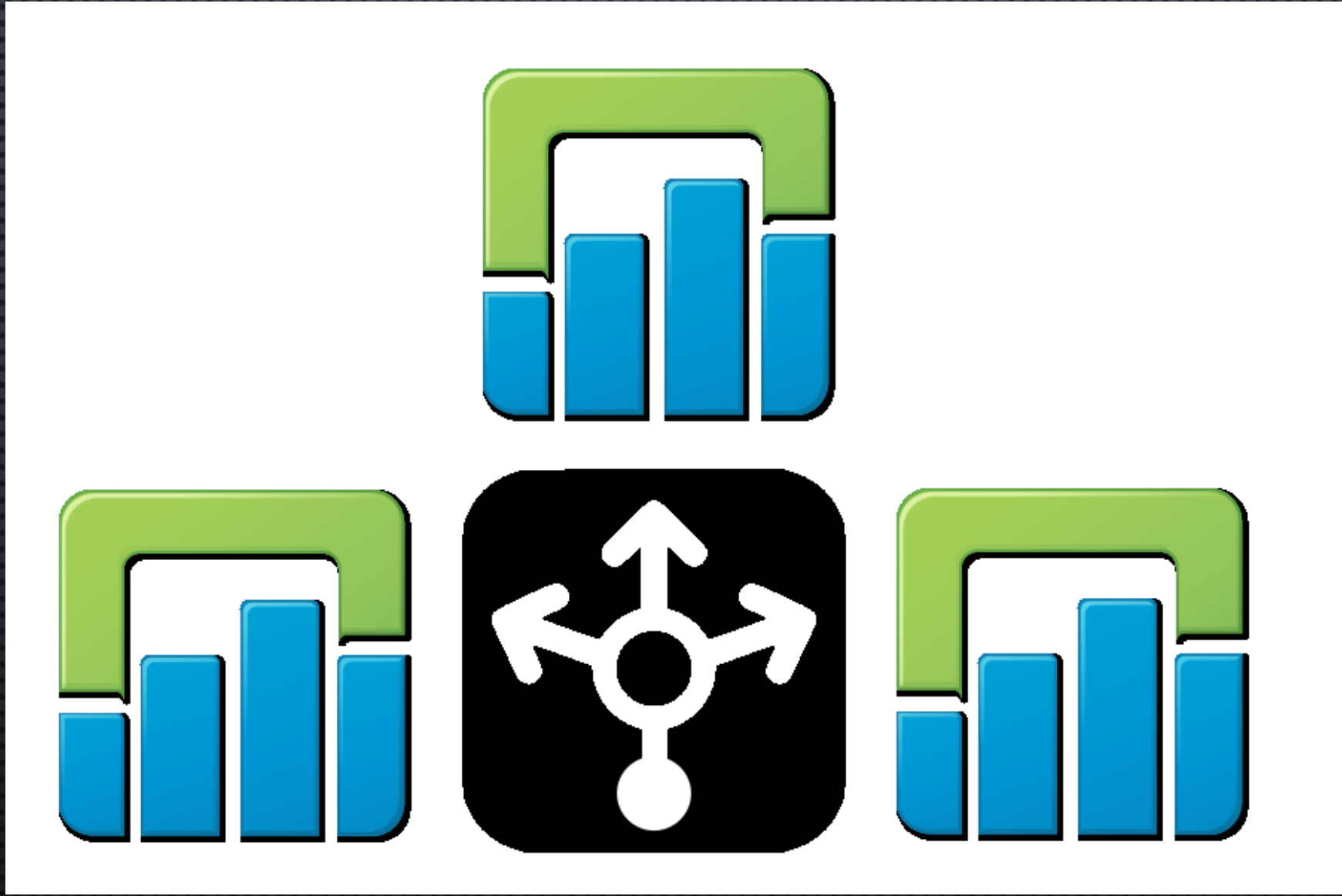
Per OSI	Per Socket
\$200	\$1500

+ SnS

## SPLUNK

New pricing from 26/02/2014				
Data volume	Annual license including enterprise support	Perpetual license *	Annual support cost *	Global Support**
50GB	\$43,700.00	\$109,250.00	\$21,850.00	\$43,125.00
100GB	\$69,000.00	\$172,500.00	\$34,500.00	\$43,125.00
200GB	\$128,000.00	\$322,000.00	\$64,400.00	\$80,500.00
500GB	\$299,000.00	\$747,500.00	\$149,500.00	\$186,875.00

\* Support cost of 20% of the license price / year on perpetual licenses  
\*\* Global support cost of 25% of the license price / year on perpetual licenses

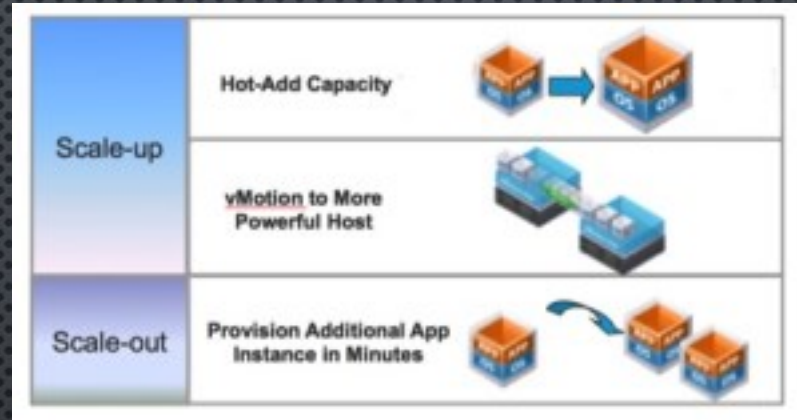




# Scale UP vs Scale Out

## Scale UP

- One Large fault domain
- Max 2TB data



## Scale Out

- Need Load Balancer
- Max 6 nodes
- Ingest more data
- Data spread out over multiple nodes/fault domains

Option	Log Ingest Rate	vCPUs	Memory	IOPS	Syslog Connections	Events per Second
Extra Small	3GB/day	2	4GB	75	20	200
Small	15GB/day	4	8GB	500	100	1000
Medium	37.5GB/day	8	16GB	1000	250	2500
Large	112.5GB/day	16	32GB	1500	750	7500



## Resources



@smflanders

sflanders.net



Technical Preview Program

loginsight.vmware.com



hol.vmware.com

HOL-SDC-1426

